

Howard Astronomical League



February 20th, 2014

Introductions



Upcoming club activities

Star Parties and public outreach!

- Monday, March 3rd 7-9 PM:
Central Library

Saturday, March 8th, 6:30-9:30 pm:
Scope out the Night, RNC

March 22nd: Public Star Party

March 29th: Members-only Star Party
(Messier Marathon)



**Member's
astrophotos and
sketches**

Mike Krauss



**In the footsteps of
William and
Caroline**

Rod Mollise

Herschel 400 and II Astronomical League observing programs



Herschel 400 and Herschel II

Observe all 400 objects

Log your observations

GOTO not explicitly disallowed

6'' needed for 400, 8''+ for HII

Object type	Herschel 400	Herschel II
Galaxies	231	323
Open Clusters	107	41
Globular Clusters	33	3
Nebulae	7	21
Planetary Nebulae	20	9
Others	2	3

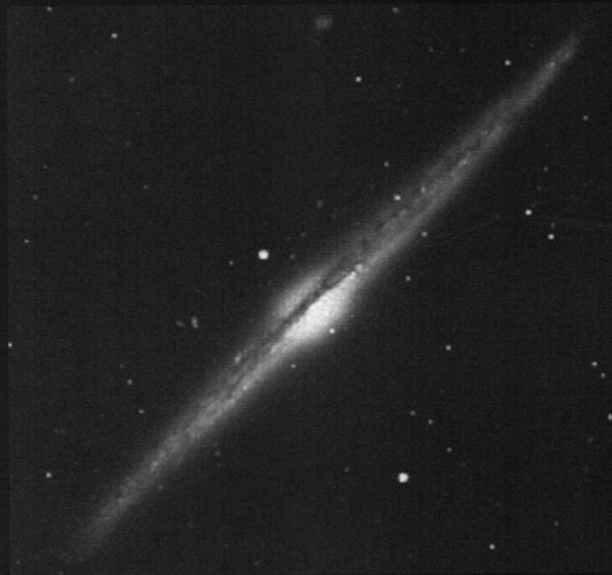
STEVE O'MEARA'S

Herschel 400 Observing Guide

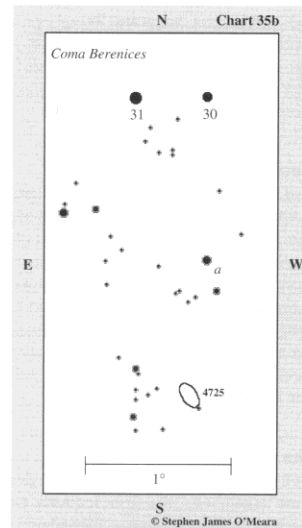
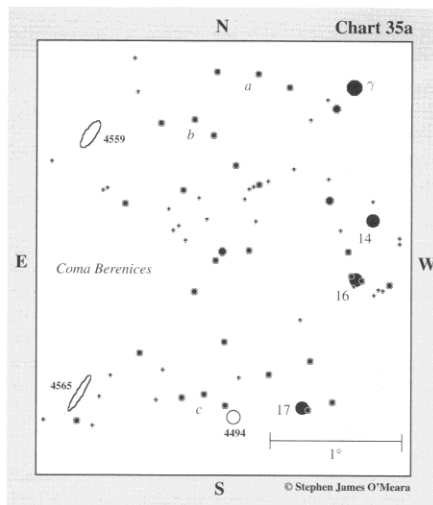
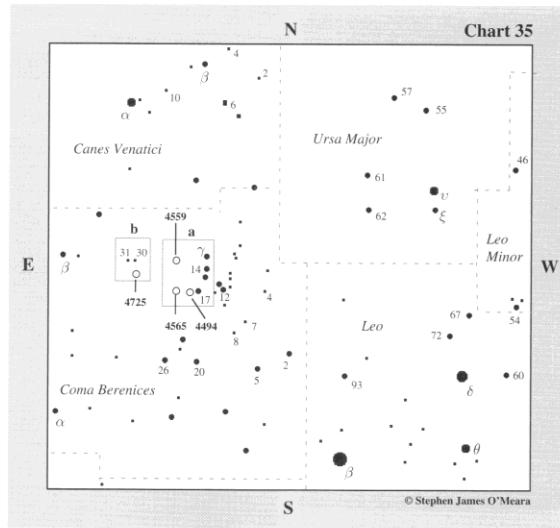


CAMBRIDGE

6 · June



Star charts for second night

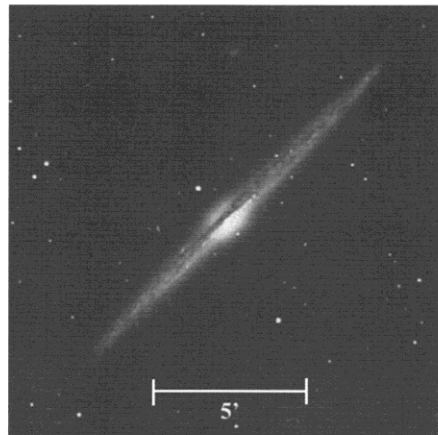


appearing as a circular glow, like a dim comet with a diffuse and slightly brighter central condensation.

Stop. Do not move the telescope. Your next target is nearby!

3. NGC 4565 (H V-24)

Type	Con	RA	Dec	Mag	Dim	Rating
Spiral galaxy?	Coma	12 ^h	+25°	9.6	16.2' ×	4
	Berenices	36.3 ^m	59'		2.3'	



General description

NGC 4565 is one of the most famous and sought-after edge-on spiral galaxies in the northern night sky. While an absolute marvel in large telescopes, it is a delicate sight in small telescopes — one that is best appreciated at moderate magnifications.

Directions

Using Chart 35a, from NGC 4494 move 15' northwest to a 20'-wide arc (c) of three 8th- to 9th-magnitude stars, oriented east-northeast to west-southwest. NGC 4565 is less than 1° due east of Arc c. Sweep slowly and carefully to it.

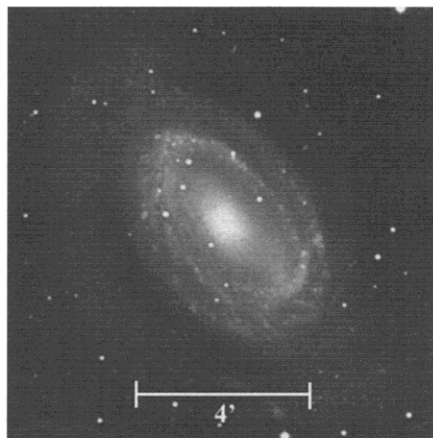
The quick view

At 23×, NGC 4565 is a 15'-long wafer of light, oriented northwest to southeast, with a small but swollen center. At 72×, the galaxy's central hub is more apparent. A 13.5-magnitude star shines just northeast of it. With averted vision and some concentration, a dust lane can be followed along the galaxy's major axis.

Stop. Do not move the telescope.

4. NGC 4725 (H I-84)

Type	Con	RA	Dec	Mag	Dim	Rating
Barred spiral galaxy	Coma	12 ^h	+25°	9.2	10.5' ×	4
	Berenices	50.4 ^m	30'		8.1'	



General description

NGC 4725 is a beautiful galaxy about 2° south-southeast of 30 Comae Berenices, which is about 4° east-southeast of Gamma Comae Berenices. The only galaxy in Coma Berenices brighter than it is M64, located only 4° to the southeast. NGC 4725 is visible in 7×50 binoculars under a dark sky, and it appears as a soft and slightly elliptical glow in the smallest of telescopes. It is a beautiful object in telescopes of all sizes.

Directions

Using Chart 35, return to 4th-magnitude Gamma Comae Berenices. Next use your unaided eyes or binoculars to locate 30 Comae Berenices about 4° to the east-southeast. Center 30 Comae Berenices in your telescope at low power, then switch to Chart 35b. From 30 Comae Berenices, make a slow and careful sweep 1° south-southeast to 7th-magnitude Star a. NGC 4725 is about 1° south and slightly east of Star a.

The quick view

At 23×, the galaxy is immediately obvious as a well-defined glow 20' west of a 20'-wide clustering of about a dozen 8th- to 12th-magnitude stars. The galaxy is also clearly elliptical, being oriented northeast to southwest; it appears very layered. Look for a bright starlike nucleus, nestled inside a

Thank You!

Next month's meeting is on Thursday,

March 20th, 2014

7:30 PM

Astroschool at 7 PM: Star hopping and
star charts/atlas

Meeting theme:

I don't know yet